



Spring
**TOWN
HALL**

Meeting

*April 4,
2019*

BCMUD Board of Directors

- Shean Dalton - President
- Donna B Parker - Vice-President
- Rebecca Tullos - Treasurer
- Kim Filiatrault - Secretary
- Michael Tucker - Asst. Secretary /
Asst. Treasurer

Meetings 2nd & 4th Thursday 6pm

Agendas, packet materials / minutes posted on website



Brushy Creek Municipal Utility District

Goals 2018-2020



1. Diversified and Expanded Programming
2. Branding and Awareness
3. Service
4. Regulatory and Management
5. Partnerships



Meeting Agenda



- Brushy Creek Park Projects
- Brushy Creek Utility System
- County Road Projects
- County Sheriff's Office



Presenters



Amy Atkins

*Brushy Creek MUD
General Manager*

Bob Daigh

*WilCo Sr. Director of
Infrastructure*

Joey Miller

*Brushy Creek MUD
Utility Systems Coordinator*

Jim Williby

*WilCo Sheriff's Office
Deputy*

District Advisory Committees



1. Parks & Recreation Committee

1st Monday of each month at 6:30pm

2. Community Center Committee

2nd Monday of every odd month at 6:30pm

3. Utilities Infrastructure Committee

3rd Monday Feb, Apr, Aug, Oct at 6:30pm

- Provide advice/make recommendations to Board
- Agendas & packet materials posted on website

District Parks Projects



Parks Projects In Progress



Community Park

- Playground
- Trail drainage

Community Garden

- Refurbishment

Cat Hollow Park

- Restroom
- Playground
- Sign

Sendero Springs Pool

- Building Addition

Parks Projects

Recently Completed



Cat Hollow Park

- Resurface Basketball Court
- Pickleball Lines on Tennis Court



Community Park-Concept



Community Park-Concept



3-12 NATURE THEME PLAYSCAPE

5-12 NATURE THEME PLAYSCAPE

6" BENCH SWINGS (3)

SIGNATURE 24' TOWER

NET CLIMBER

ODDLE SWING

ASTROTURE BERM

BERM SLIDE WITH CLIMBING ROCKS

TUNNEL

RHYTHM MUSIC STATION

STAGECOACH

DINO DIG

TRAIN TRACK

MOOSE & GOOSE

ADONIS AHEAD

LITTLE RED FOX

SEEK AND FIND PANEL

DISCOVERY TRAIL ANIMAL SCULPTURES

2-5 PLAYSCAPE

ANIMAL SPRING RIDERS

SAND ARKA BOAT AND ADA TABLE

FLAGSTONE WATER PUMP

Scale: 1" = 10'
North
Date: March 26, 2014

Brushy Creek Utility Services

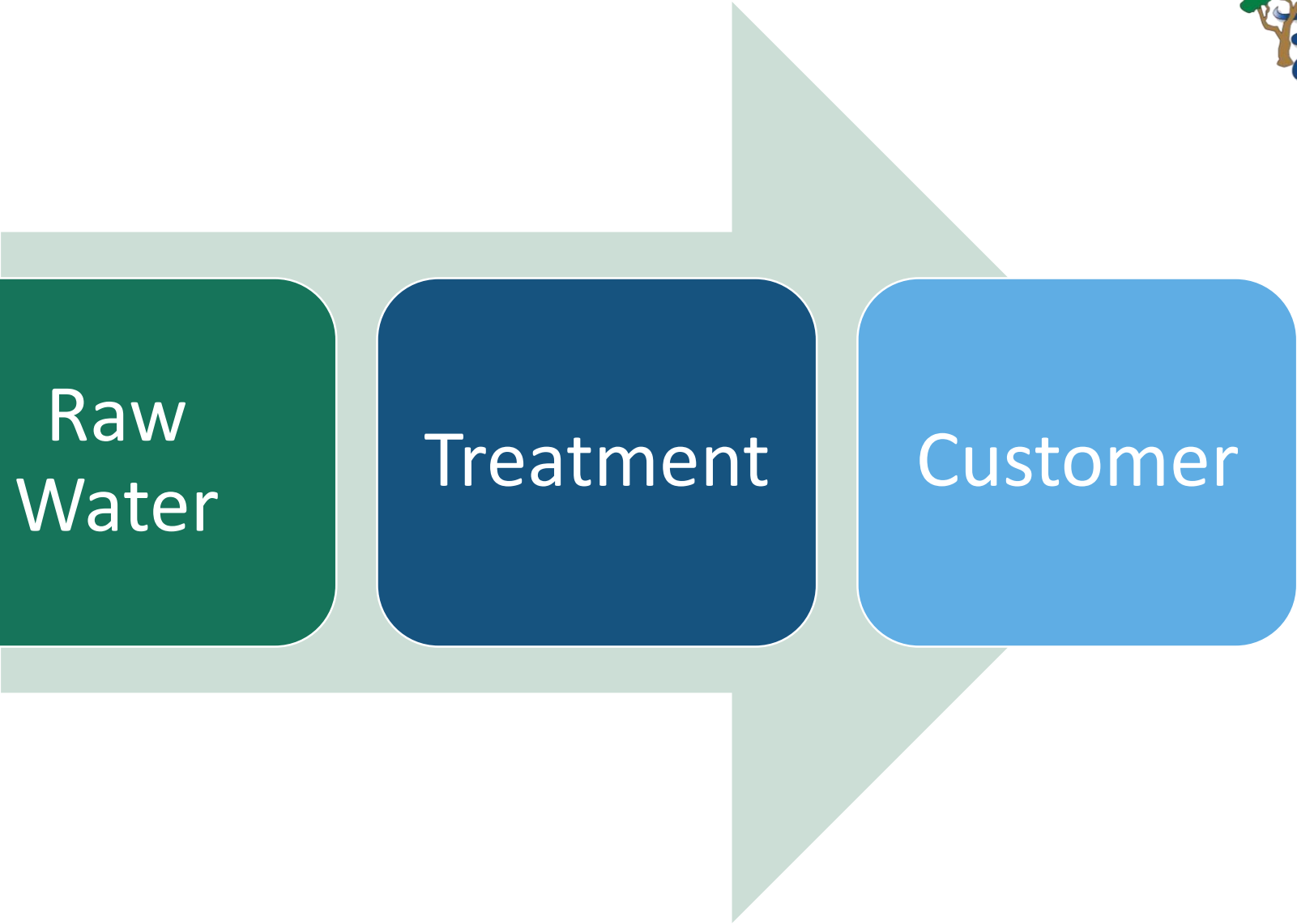


Joey Miller
Utility Systems Coordinator



Where Does Our Water Come From?





Water Sources / Surface Water



**The Water
Journey Begins ...**

**Stillhouse Dam
Belton, TX**



Water Sources



Water from Stillhouse is pumped to Lake Georgetown. There is where the District has their intake structure.

- 3 intake pumps
 - 1 – 1500 gallons per minute (gpm)
 - 2 – 5000 gpm
- 12 mile pipeline from Lake Georgetown to raw water pond at plant
- Maximum of 4,000 acre feet per year
 - 1 acre foot equals 325,851 gallons



Water Sources



Brushy Creek Intake



Screens



Water Sources / Groundwater



- **3 Wells**
 - Well 3 – 900 gpm
 - Well 5 – 330 gpm
 - Well 6 – 900 gpm
- Wells are Located approximately 3 Miles from Plant
- Line is sized for 1750 gpm
- Water is Mixed with Surface Water at Plant

Brushy Creek Wells



Well 3



Well 6



Water Treatment



Raw Water Pond / 8 million gallons



Storage Tanks / (2) 1 million gallon



Water Treatment Facility



- **State of the Art Filtration Plant**
- **Onsite Lab for Water Quality Testing**
- **Onsite Emergency Generator**
- **Can Treat a max of 8.1 million Gallons a day**
- **Staffed by 4 Operators**

Water Treatment Train



Raw Water Pond



Microfiltration Racks



Elevated Storage





Our Visitors from the North

What are Zebra Mussels?



- Found in Freshwater Lakes
- Introduced to the Great Lakes in 1985
- First Discovered Infestation in Texas was Lake Texoma in 2009
- As of 2018 (14) Lakes can be Classified as Fully Infested (Including Lake Georgetown)

What Issues Can They Cause?



- Zebra Mussels can result in Issues for the Raw Water Intake Structures and Raw Water Pipelines
- They Adhere to Hard Surfaces to Form Multilayer Colonies
- They Can Harm Screens, Pumps, and Cause Pipe Stoppages

Working Together



The District is working with different entities to get this issue under control.

State:

- Texas Commission on Environmental Quality
- Brazos River Authority

City:

- Round Rock
- Georgetown

Private:

- MRB
- Walker Engineering



Zebra Mussels Control Strategies



Chemical

- Free Chlorine, Chlorine Dioxide, Permanganate, Ozone
- Kills the Zebra Mussel

Physical

- Mechanical Cleaning, Scraping, Pressure Cleaning, Sand Blasting
- Cleans the System

Material

- Selective Coatings and/or Material
- Prevents Adhering to the Surface

Brushy Creek Water



Designated Superior in Quality, Treatment, Pumping and Storage Capacity



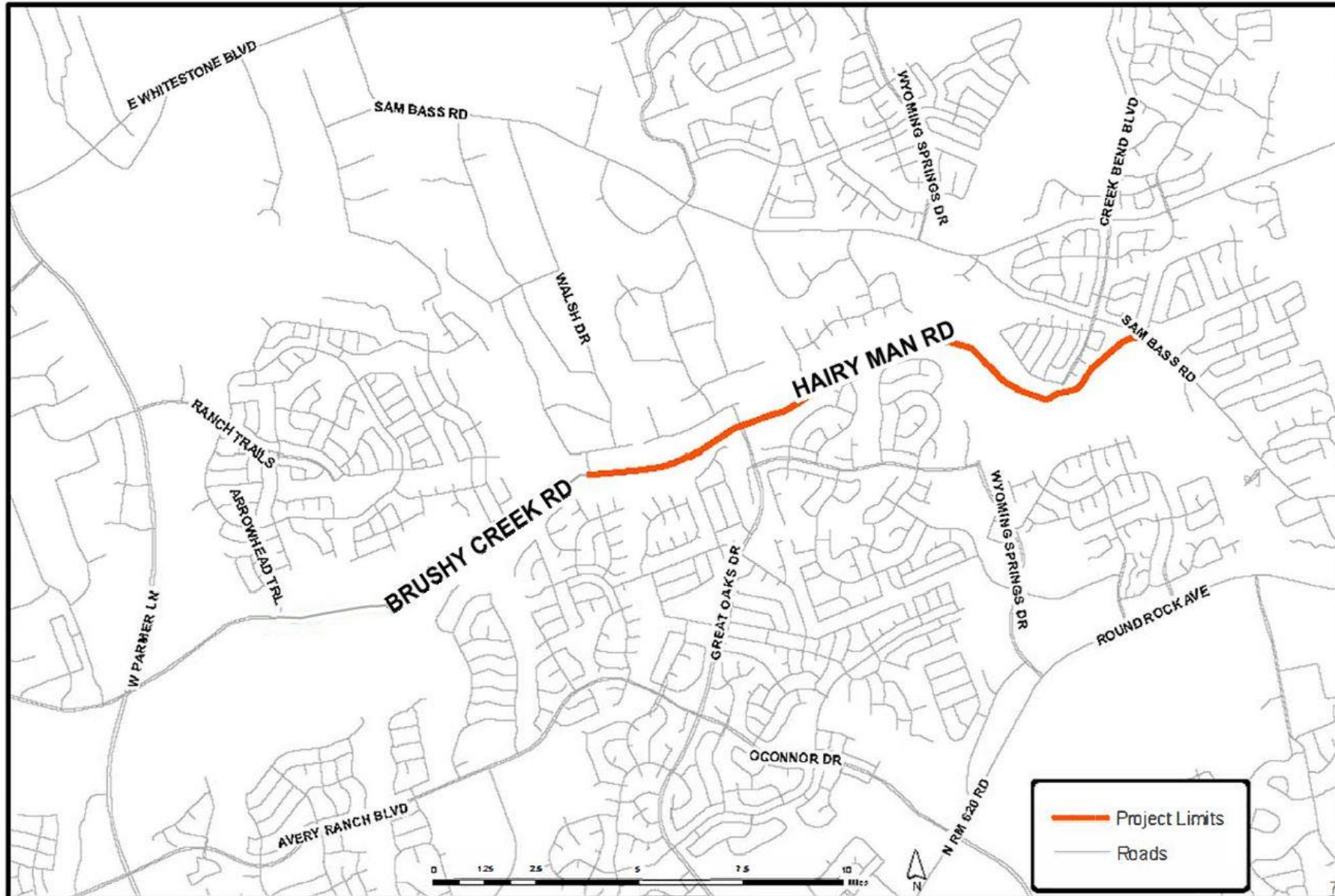
Texas Commission on Environmental Quality



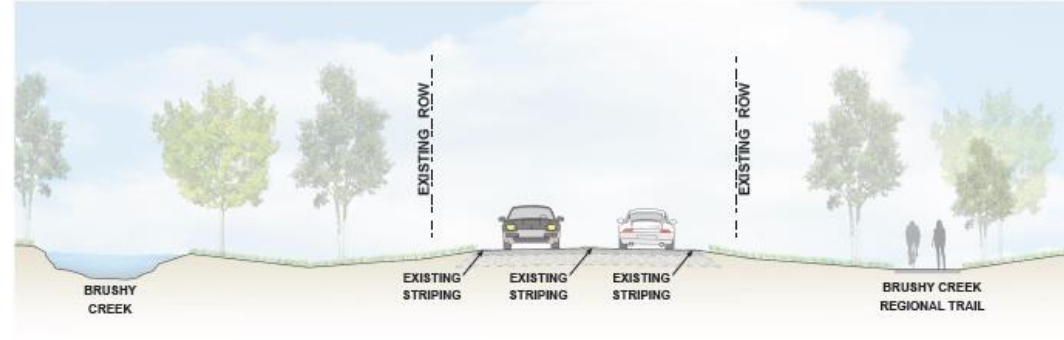
County Road Projects



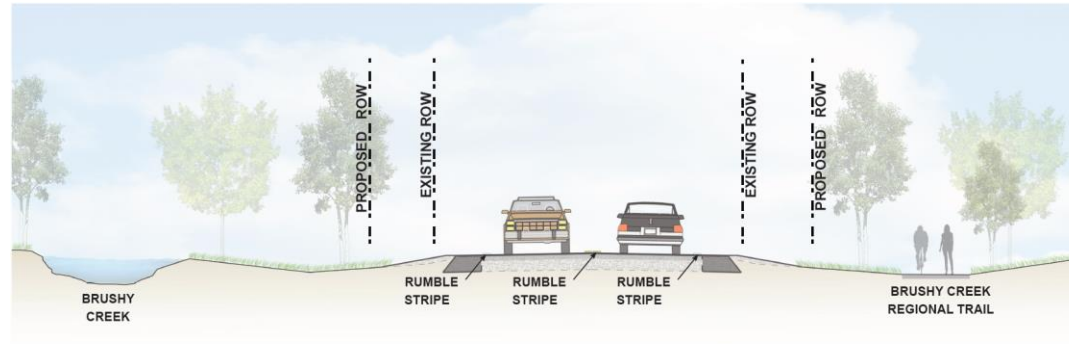
HAIRY MAN ROAD SAFETY IMPROVEMENTS BRUSHY BEND TO SAM BASS ROAD



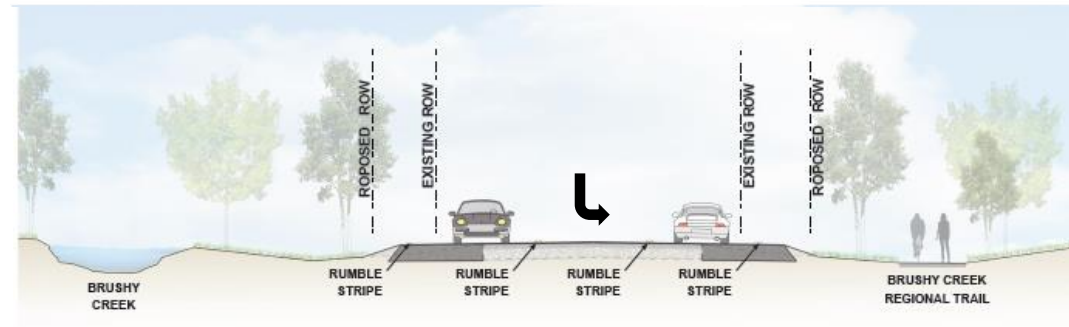
HAIRY MAN ROAD SAFETY IMPROVEMENTS BRUSHY BEND TO SAM BASS ROAD



EXISTING TYPICAL SECTION



PROPOSED TYPICAL SECTION



**PROPOSED TYPICAL SECTION - TURN LANES
AT OLSEN MEADOWS & CREEKSIDE PARKS**

HAIRY MAN ROAD SAFETY IMPROVEMENTS
BRUSHY BEND TO SAM BASS ROAD

Limits: Brushy Bend to Sam Bass Rd

Length: Approximately 2.4 miles

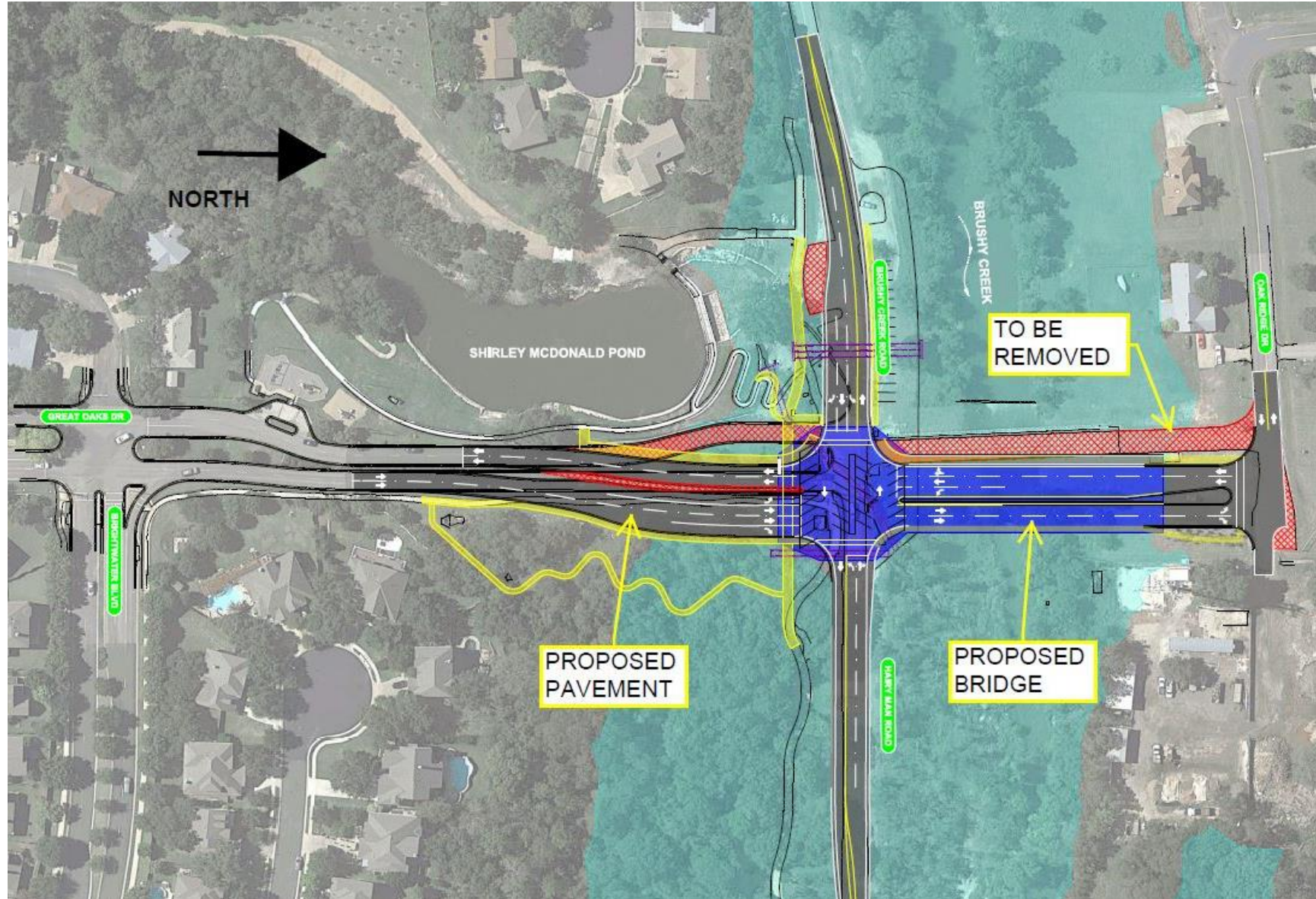
Description: Add two foot shoulders, add rumble striping and left turn lanes into Olsen Meadows and Creekside Parks

Total Estimated Construction Cost: \$3.6 M

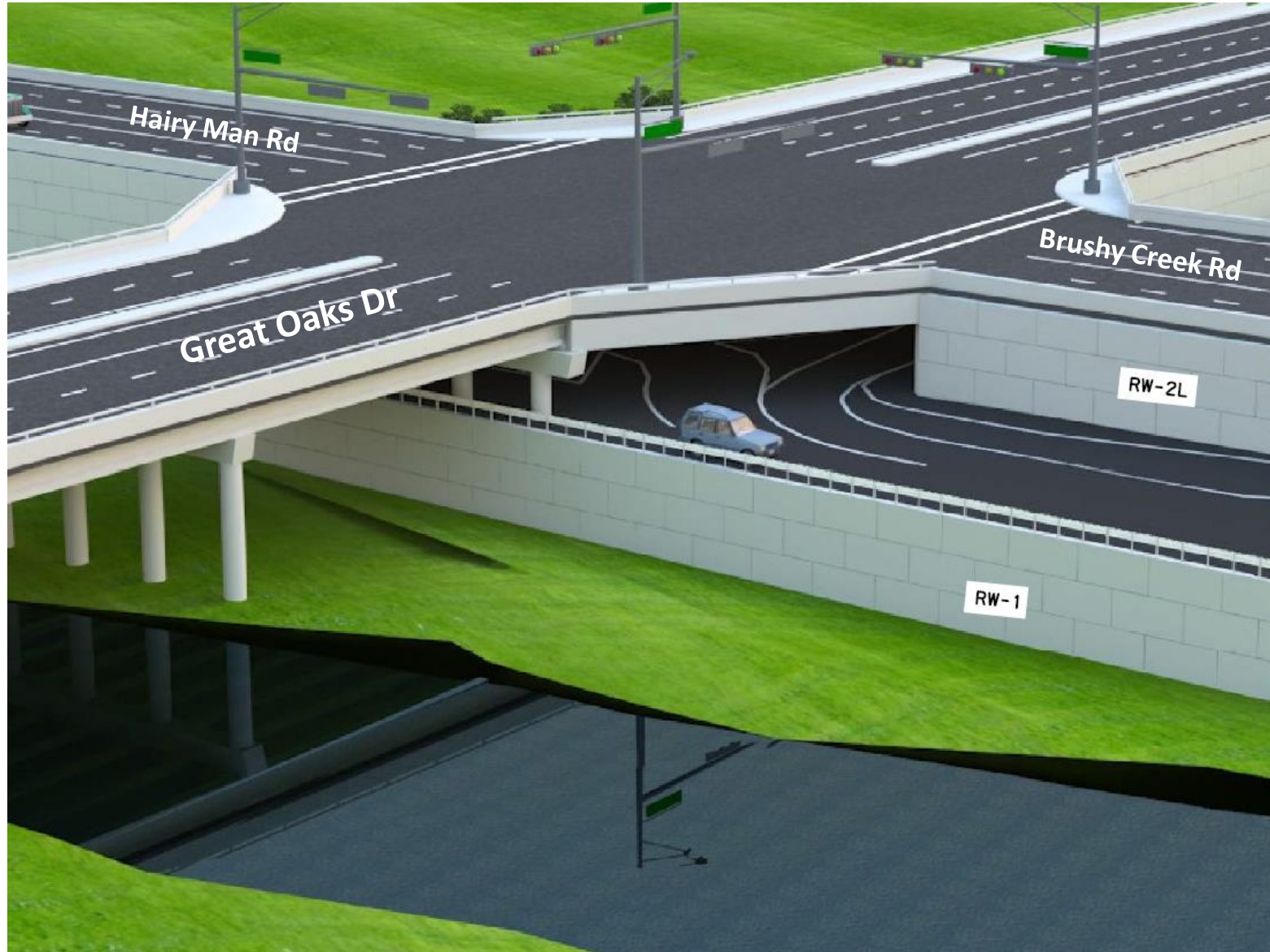
Current Status: Design Phase

Estimated Construction Start: Summer 2019

GREAT OAKS BRIDGE AT BRUSHY CREEK/HAIRY MAN ROAD IMPROVEMENTS



GREAT OAKS BRIDGE AT BRUSHY CREEK/HAIRY MAN ROAD IMPROVEMENTS



GREAT OAKS BRIDGE AT BRUSHY CREEK/HAIRY MAN ROAD IMPROVEMENTS



GREAT OAKS BRIDGE AT BRUSHY CREEK/HAIRY MAN ROAD
IMPROVEMENTS

Limits: At the intersection of Great Oaks Drive and Brushy Creek / Hairy Man Road.

Length: Approximately 0.3 miles

Description: Intersection improvements and bridge replacement

Total Estimated Construction Cost: \$7.5 M

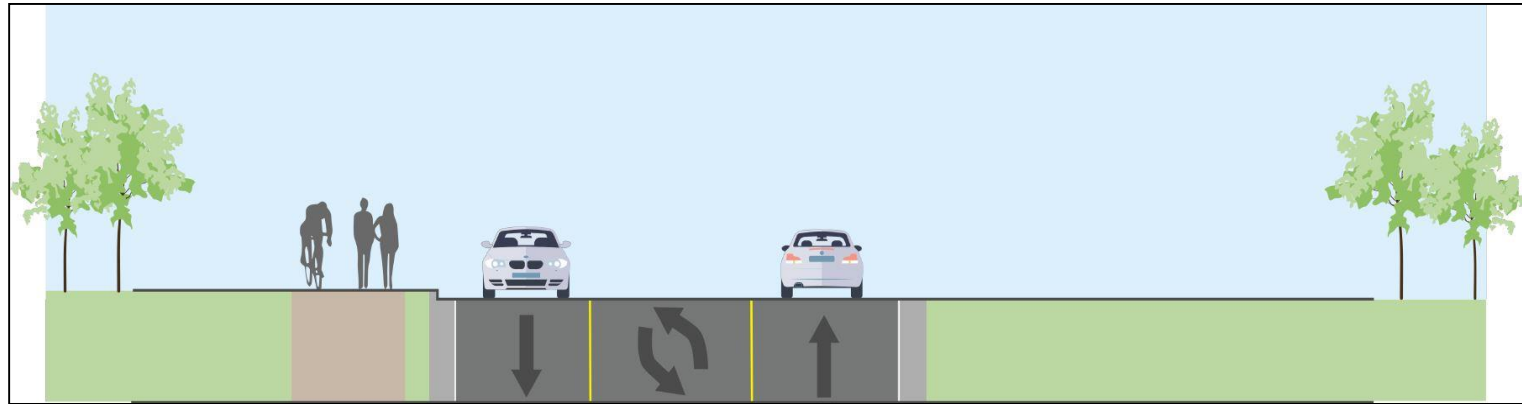
Current Status: Design Phase

Estimated Construction Start: Late 2019

Sam Bass Road (Corridor H)



Sam Bass Road (Corridor H)



Proposed Typical Section

Sam Bass Road (Corridor H)

Limits: RM 1431 to Wyoming Springs Drive

Length: Approximately 2.6 miles

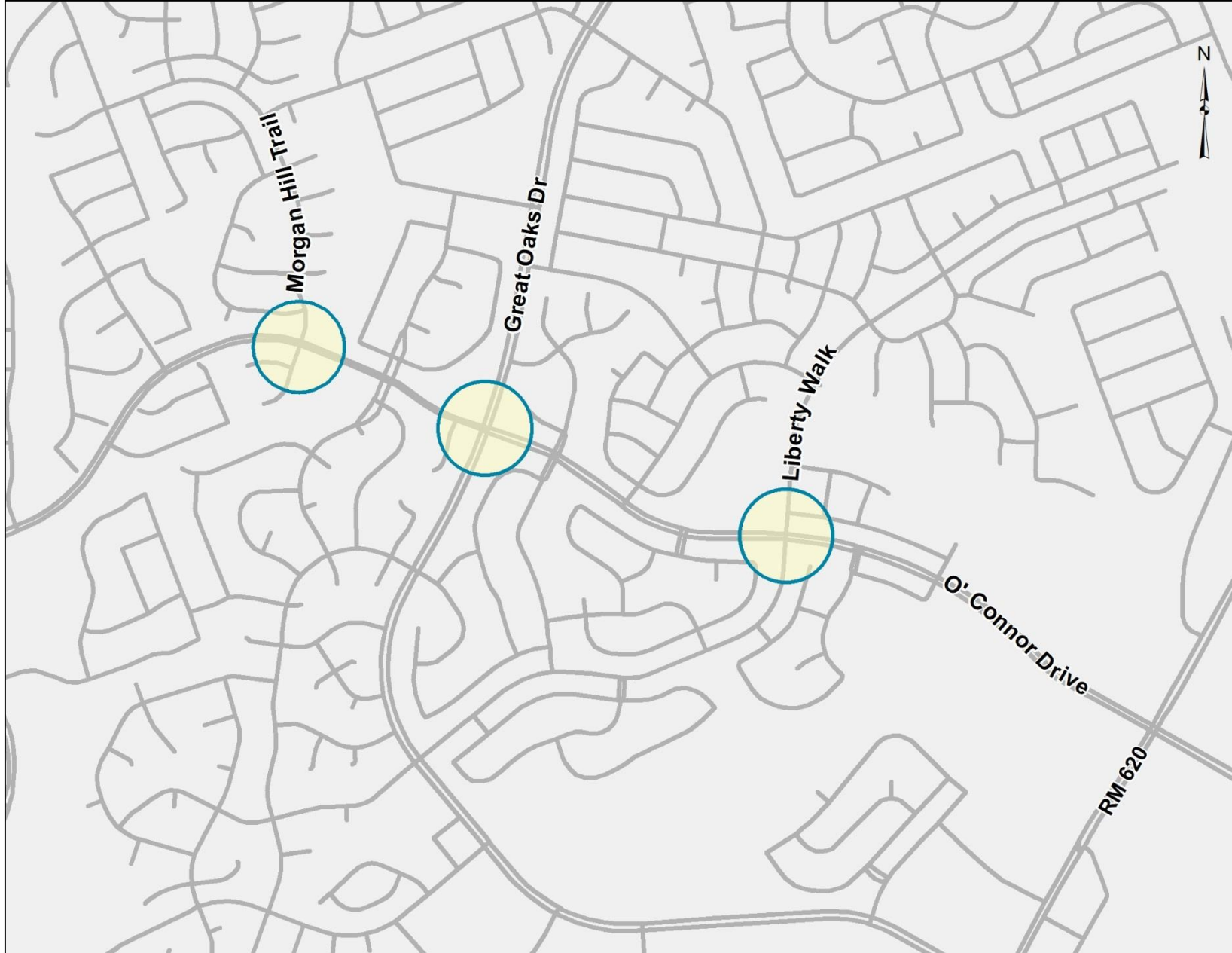
Description: Reconstruction of existing road, addition of center turn lane and Shared-use path for bicycle and pedestrian access. Improvement of intersections at RM 1431, Walsh Ranch Boulevard, and Great Oaks Drive

Total Estimated Construction Cost: \$13.7 M

Current Status: Design Phase

Estimated Construction Start: Construction funding has not been identified

O'Connor Drive Signals



O'Connor Drive Signals

Limits: O'Connor Drive at Morgan Hill Trail, Great Oaks Drive, and Liberty Walk

Length: N/A

Description: Addition of traffic and pedestrian signals at O'Connor Drive at Morgan Hill Trail, O'Connor Drive at Great Oaks Drive, and O'Connor Drive at Liberty Walk.

Total Estimated Construction Cost: \$0.9 M

Current Status: Design Phase

Estimated Construction Start: Late 2019

Williamson County Sheriff's Office Community Engagement



Brushy Creek Life *Days*



This Saturday, April 6

Buy 1 Get 1 FREE Shirts!

8:00 am: FREE Yoga Class

9:00 am: Spring Clean Up

10:00 am: MUD Run

12:00 pm: April Pool's Day

www.bcmud.org

#1

Best Place to Live Niche Website Ranking



#1 in Williamson County

#4 in Greater Austin Area

#18 in entire State of Texas

#203 Nationwide



Community Center Open House



This evening until 8:00pm

- FREE PreK Gym Play
- Bounce House
- BBQ Cook-Off Shirts ON SALE
- FREE Rock Climbing Wall



BRUSHY CREEK
COMMUNITY CENTER
OPEN HOUSE
Thursday, April 4
5:00 - 8:00 PM
Sign up for Summer Programs!

A graphic with a teal background and rounded corners. On the left, there is a white silhouette of a person rock climbing. The text is centered on the right side of the graphic.

**Join us for the 12th annual
Brushy Creek Backyard BBQ Cook-Off
& Family Festival
Saturday, MAY 4, 12-6pm**



Spring 2019 Town Hall Meeting

