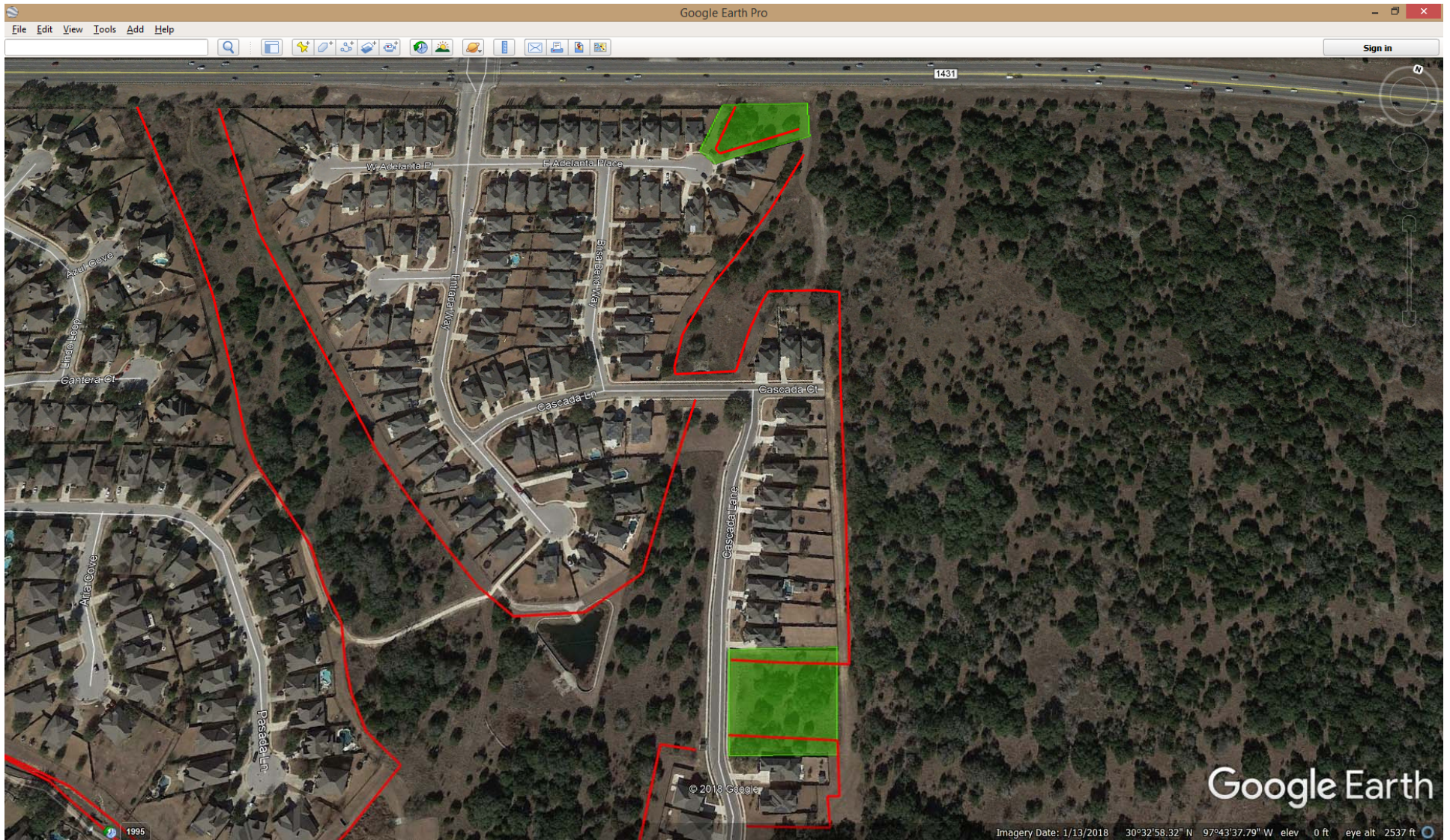


2019 Shaded Fuel Break Trimming—red line indicates fuel break. Green shaded areas are environmental preserves—no vehicles, fuel or chemicals in these areas.

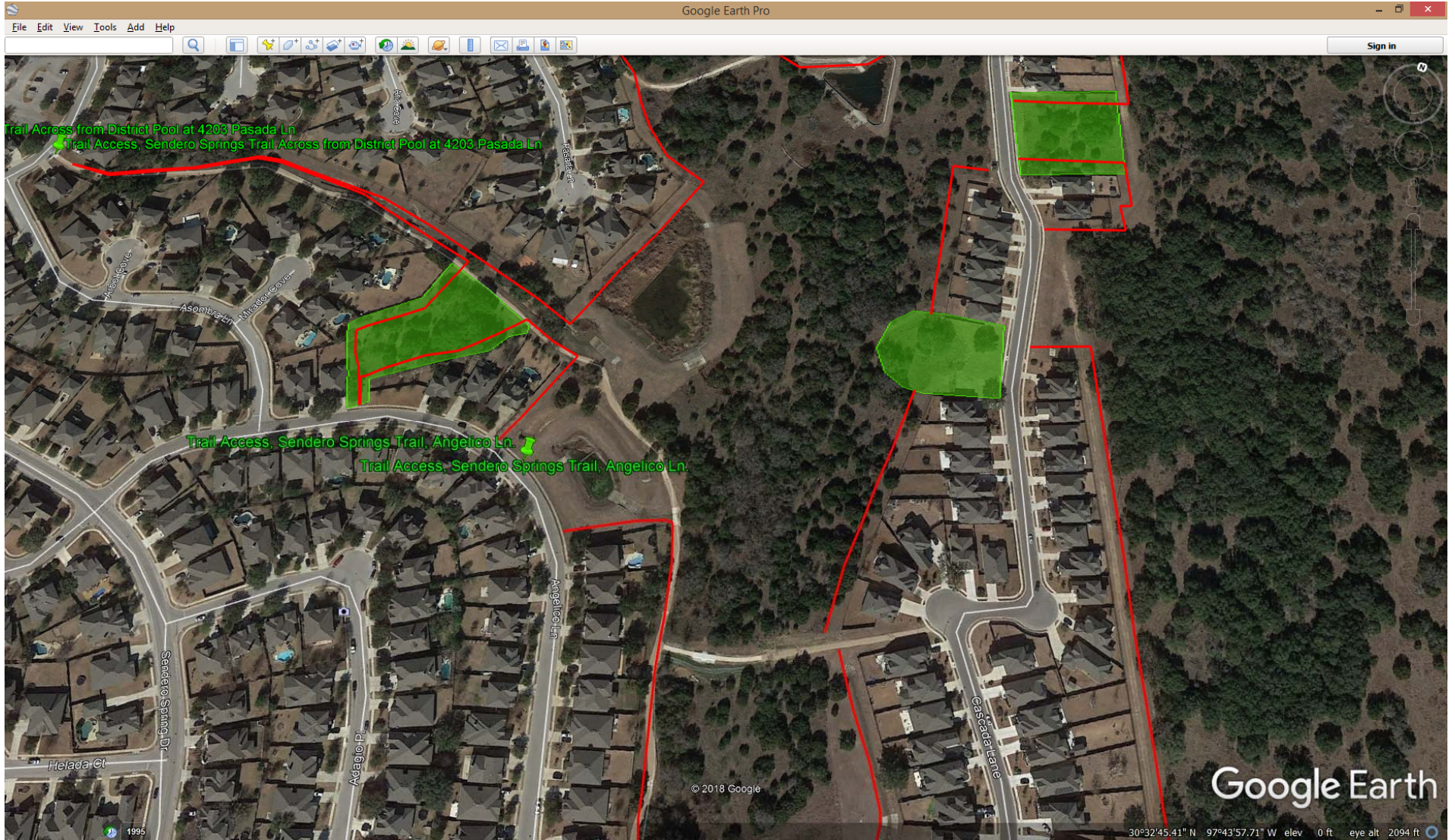
FM 1431 to Sendero Section 6 pond





2019 Shaded Fuel Break Trimming—red line indicates fuel break. Green shaded areas are environmental preserves—no vehicles, fuel or chemicals in these areas.

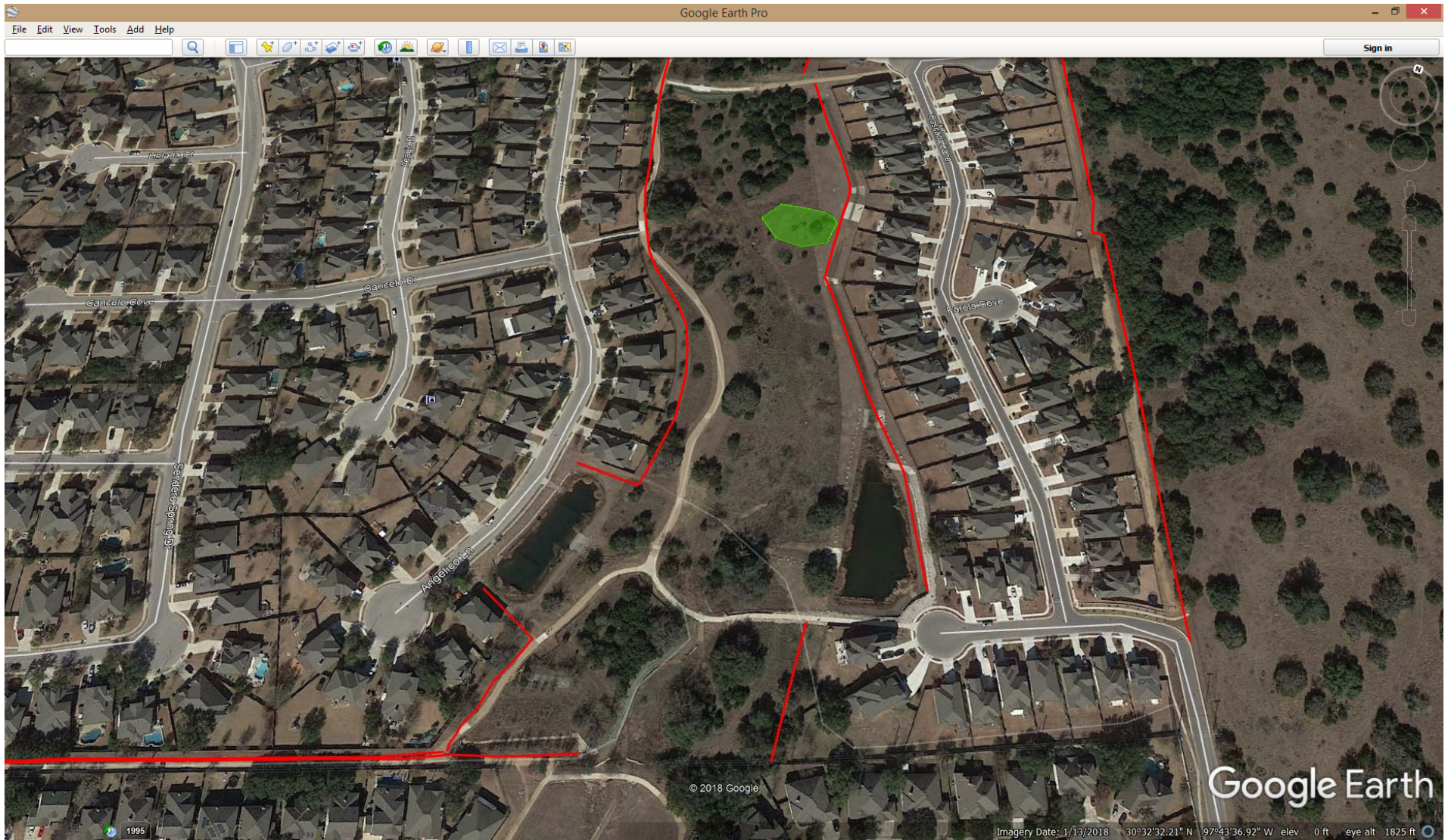
Pasada Ln , Angelico Ln and Cascada Lane





2019 Shaded Fuel Break Trimming—red line indicates fuel break. Green shaded areas are environmental preserves—no vehicles, fuel or chemicals in these areas.

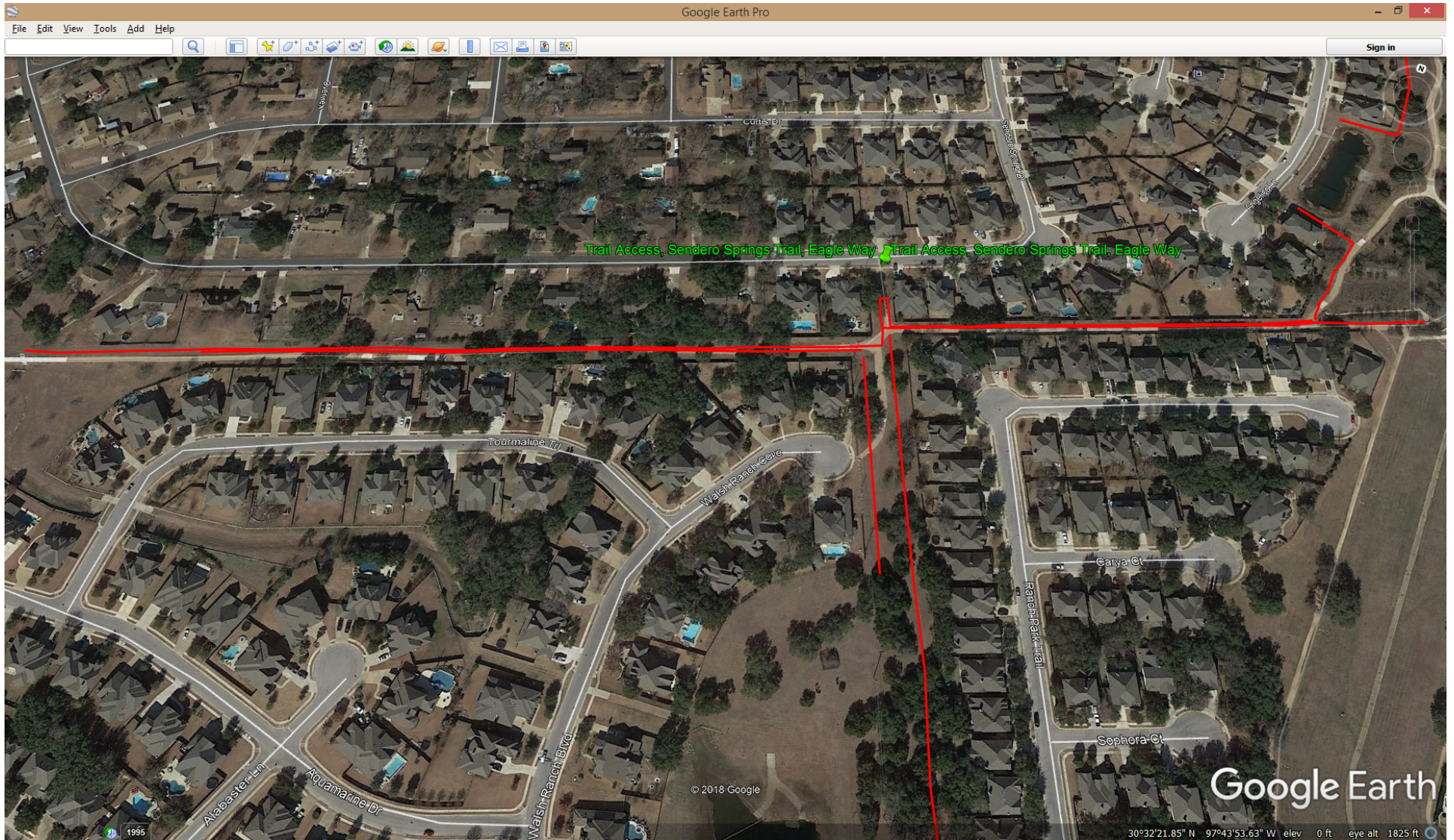
Cancelo Ln, Angelico Ln and Cascade Lane to Section 7 pond





2019 Shaded Fuel Break Trimming—red line indicates fuel break. Green shaded areas are environmental preserves—no vehicles, fuel or chemicals in these areas.

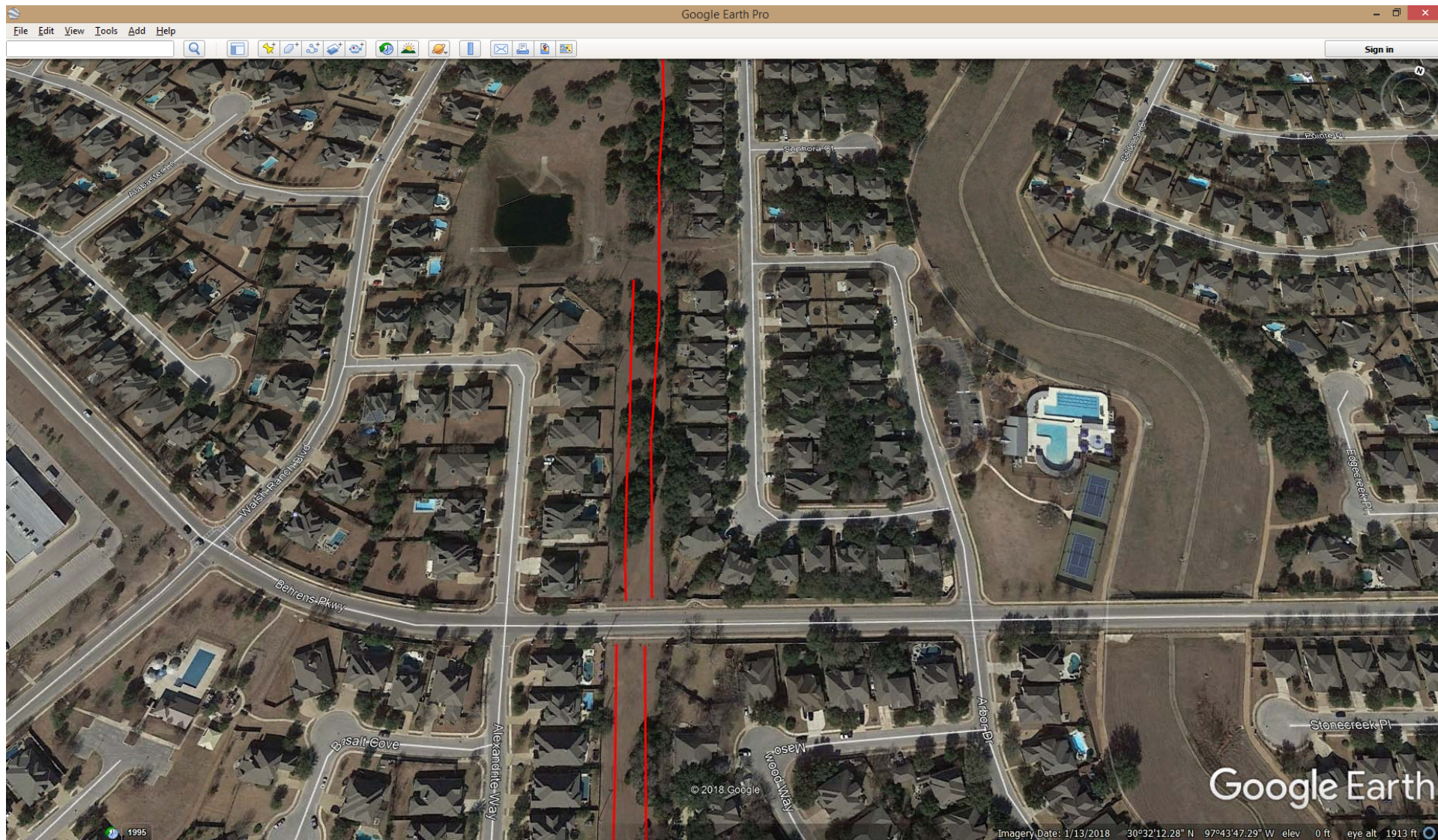
Eagle Way from North Park to Section 7 pond, top part of 100' Easement





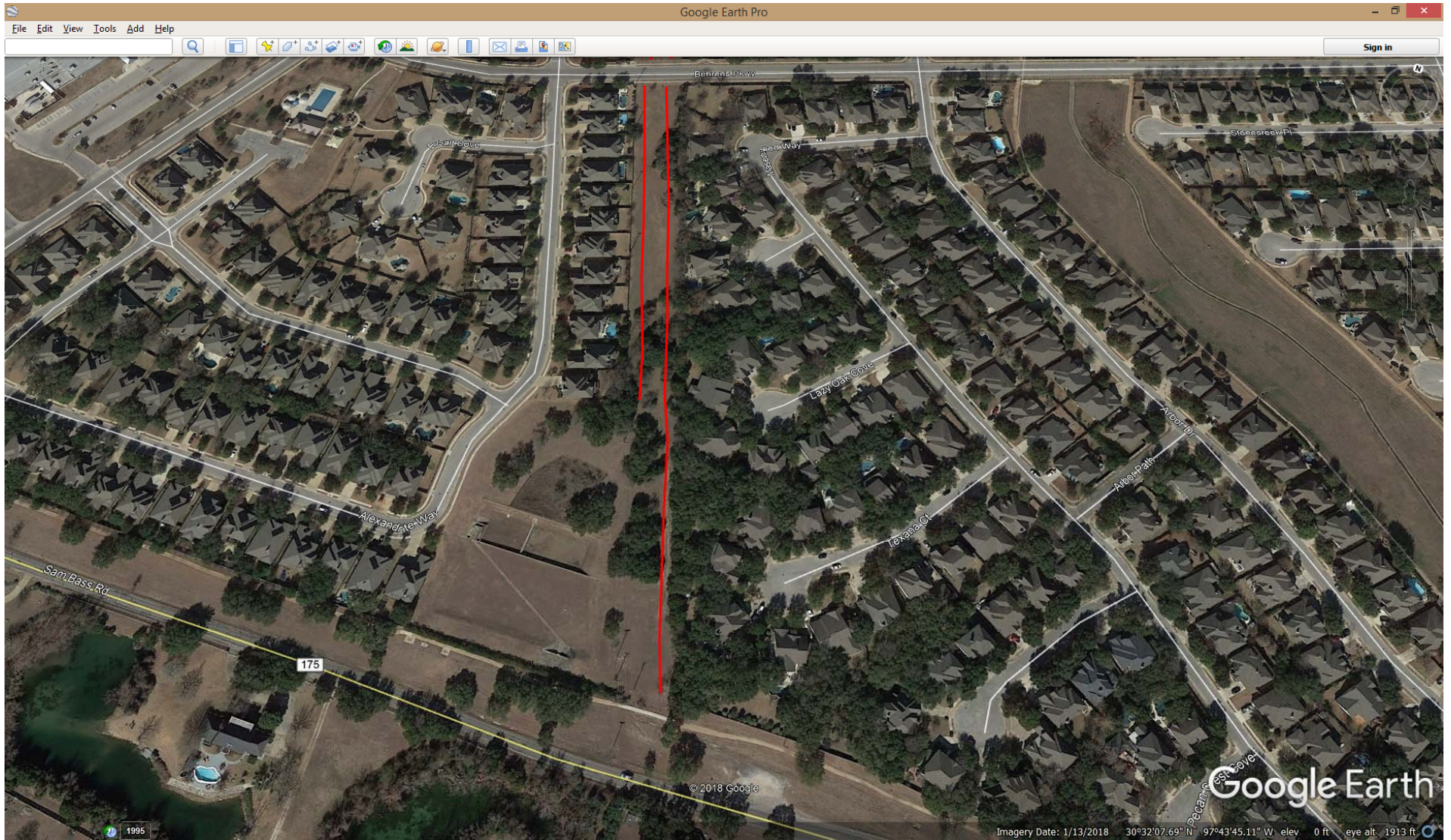
2019 Shaded Fuel Break Trimming—red line indicates fuel break. Green shaded areas are environmental preserves—no vehicles, fuel or chemicals in these areas.

Middle section of 100' Easement crossing Behrens's Parkway



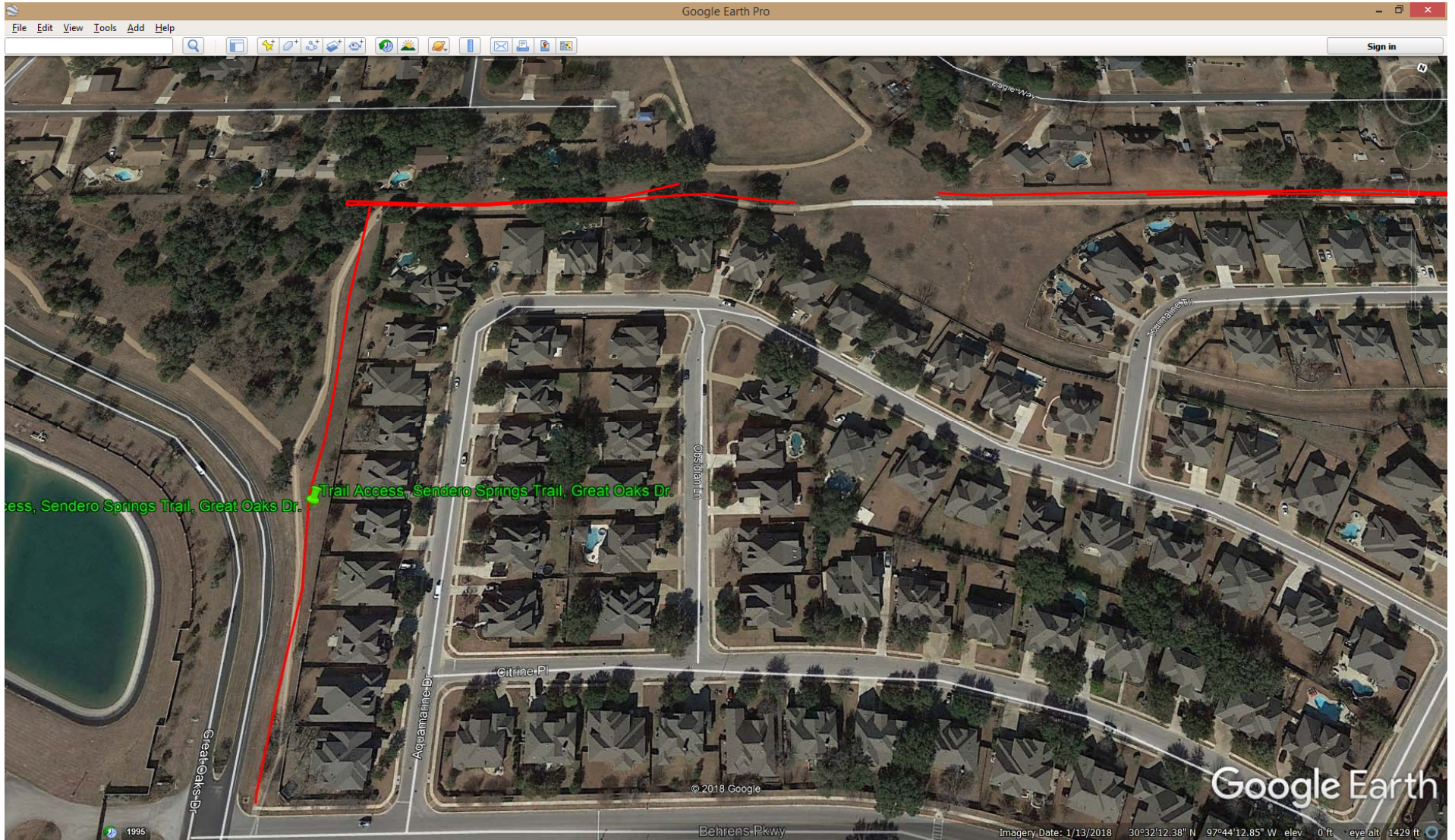


2019 Shaded Fuel Break Trimming 2019 Shaded Fuel Break Trimming—red line indicates fuel break. Green shaded areas are environmental preserves—no vehicles, fuel or chemicals in these areas.





2019 Shaded Fuel Break Trimming 2019 Shaded Fuel Break Trimming—red line indicates fuel break. Green shaded areas are environmental preserves—no vehicles, fuel or chemicals in these areas.





2019 Shaded Fuel Break Trimming 2019 Shaded Fuel Break Trimming—red line indicates fuel break. Green shaded areas are environmental preserves—no vehicles, fuel or chemicals in these areas.

